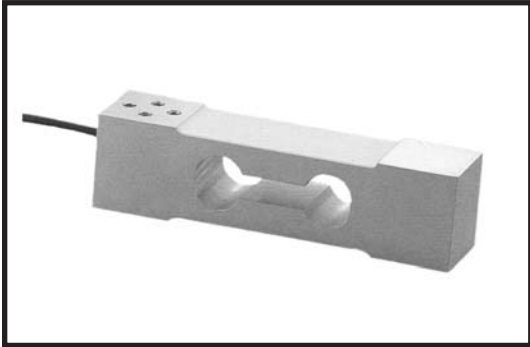




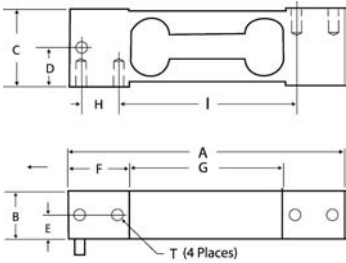
**FAS Single Point, Aluminum**



CAPACITY MODEL	
10kg	FAS-10kg
20kg	FAS-20kg
30kg	FAS-30kg
50kg	FAS-50kg
75kg	FAS-75kg
100kg	FAS-100kg

DESCRIPTION	PRICE LIST
Single Point Aluminum Load Cells (Equivalent to Rice Lake RL 1040 & Tedeia 1040)	
• 10, 20, 30, 50, 75, 100kg capacities .....	\$135.00

DIMENSIONS:											
CAPACITY		A	B	C	D	E	F	G	H	I	T
10kg - 100kg	in.	5.91	0.94	1.57	0.79	0.47	1.18	3.15	0.75	3.94	1/4"-20 UNC
	mm.	150	25	38	20	12.5	34	80	19	100	



**SPECIFICATIONS:**

Full Scale Output:	2.0mV/V ± 10%
Creep after 20 minutes:	0.02% of FS output
Total Error:	0.02% of FS output
Safe Overload:	1.5 x rated capacity
Insulation Resistance:	>5000 MΩ
Temp. Compensated:	14°F to 120°F (-10°C to +50°C)
Input Impedance:	400Ω ± 30Ω
Output Impedance:	350Ω ± 3Ω
Rated Excitation:	10V DC/AC
Maximum Excitation:	20V DC/AC
Cable Length:	10 feet

**SCHEMATIC:**

