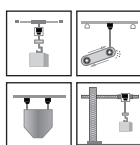
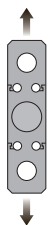


“S” Type



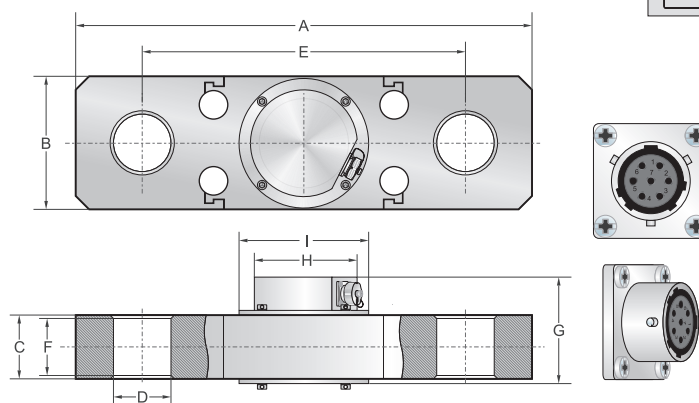
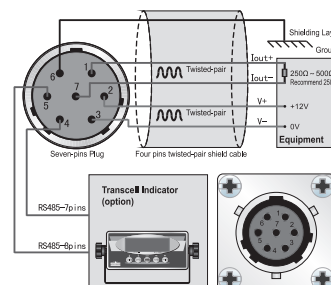
Capacities

40t, 60t, 100t, 130t, 160t

Features

- Nickel-plated alloy steel construction
- High accuracy
- High stability
- High protection class
- 0 ~ 20mA output / RS485 signal output (option)
- Easy to install
- Use in tough industrial environment
- Suitable for hook scales, hopper scales, packing scales and overload limiter, etc.

Schematic



Capacities		A	B	C	D	E	F	G	H	I
40t	mm	480	140	67	2XØ60.5	340	60	112	Ø112	Ø136
60t	mm	520	160	87	2XØ70.5	360	80	132	Ø112	Ø136
100t	mm	580	180	90	2XØ65	360	83	135	Ø116	Ø144
130t	mm	580	180	90	2XØ71	360	83	135	Ø126	Ø154
160t	mm	740	200	110	2XØ100.5	500	103	135	Ø136	Ø164

Specifications

Rated Output	2.0mV/V±0.1%	Safe Temp. Range	-40°C to + 70°C
Creep after 30 minutes	±0.3% of rated output	Temp. Compensated	-10°C to + 40°C
Nonlinearity	±0.3% of rated output	Safe Overload	150%
Hysteresis	±0.25% of rated output	Ultimate Overload	300%
Repeatability	±0.2% of rated output	Input Impedance	387 ohm ± 20 ohm
Temp. effect on output	≤0.02% of applied output /°C	Rated Excitation	12V DC/AC
Temp. effect on zero	≤0.02% of rated output /°C	Maximum Excitation	15V DC/AC
Wire Type	7 pins connector		