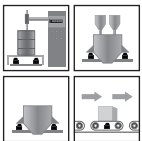
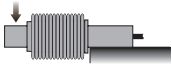


Single Ended Shear Beam



Capacities

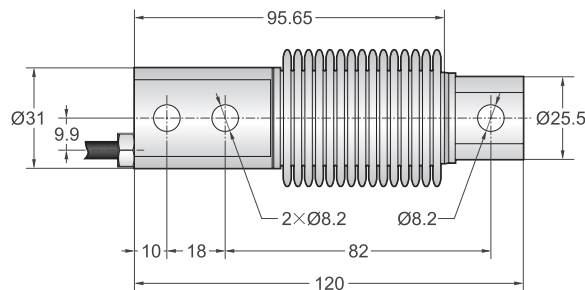
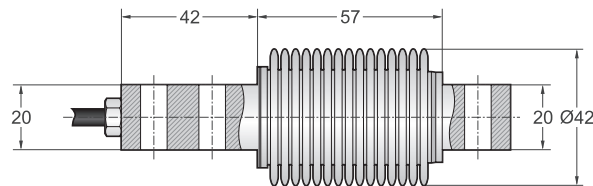
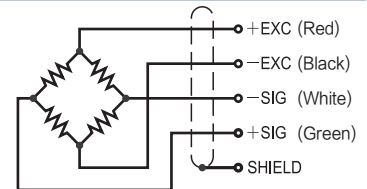
10kg, 20kg, 30kg, 40kg, 50kg, 75kg, 100kg, 150kg, 200kg, 300kg, 500kg

Features

- Single ended shear beam load cell
- Stainless steel construction
- Welded Gage Cavity
- High accuracy
- High stability
- High protection class
- Easy to install
- IP Grading meets IP67, optional IP68
- Accuracy meets C3
- Use in tough industrial environment
- Suitable for tank-packing scales, belt scales and batching systems, etc.

Schematic

- Red: + input
- Black: - input
- White: - output
- Green: + output



Specifications			
Rated Output	2.0mV/V \pm 0.1%	Safe Temp. Range	-10°C to + 70°C
Zero Balance	\pm 1% of rated output	Temp. Compensated	-10°C to + 40°C
Creep after 30 minutes	\pm 0.03% of rated output	Safe Overload	150%
Nonlinearity	\pm 0.03% of rated output	Input Impedance	387 ohm \pm 20 ohm
Hysteresis	\pm 0.03% of rated output	Output Impedance	350 ohm \pm 5 ohm
Repeatability	\pm 0.03% of rated output	Insulation Resistance	\geq 5000 M ohm (50V DC)
Temp. effect on output	\leq 0.002% of applied output/°C	Rated Excitation	10V DC/AC
Temp. effect on zero	\leq 0.002% of rated output/°C	Maximum Excitation	15V DC/AC
Wire Length	3m	Wire Material	Red(+ E) Black(- E) White(- S) Green(+ S)