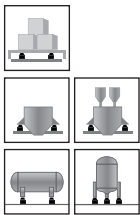
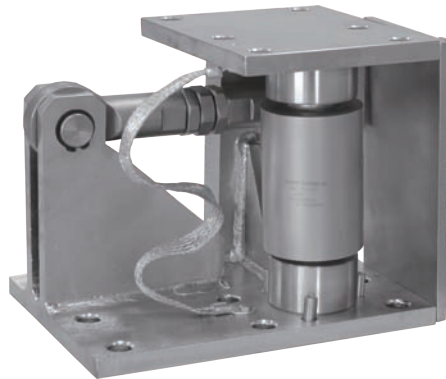
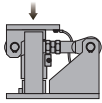


Weighing Mount



Capacities

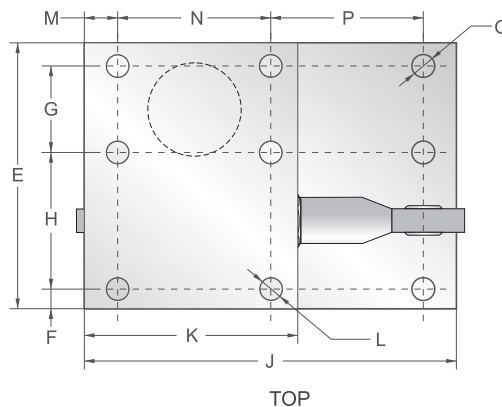
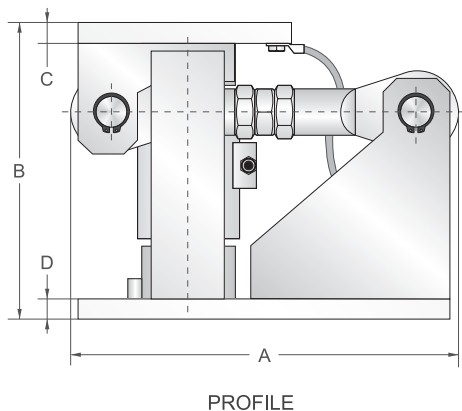
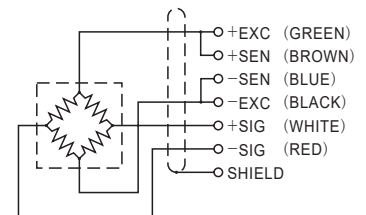
15t, 20t, 30t, 50t, 100t

Features

- Stainless steel construction
- Comes with a safety support block mark for overload protection
- Big Capacity, Light self-weight
- Suitable for large tonnage tank weighing control in harsh environments
- CD-GD (column type load cell) installed

Schematic

- Green: + input
- Black: - input
- White: + output
- Red: - output
- Brown: + sense
- Blue: - sense



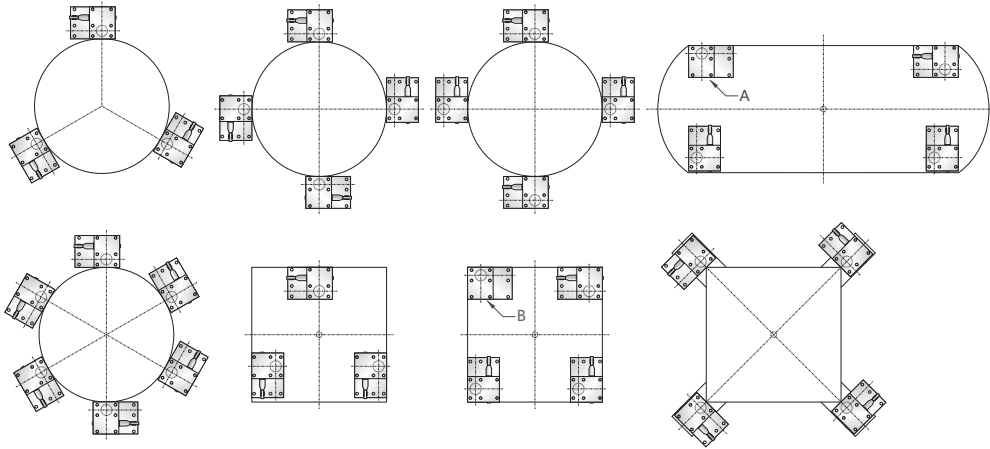
Capacities		A	B	C	D	E	F	G	H	J	K	L	M	N	P	Q
15t~50t	mm	292	222.5	15	15	200	17.5	65	102.5	280	160	6xØ18	25	115	115	9xØ18
100t	mm	432	300	30	30	400	35	165	165	420	300	6xØ22	35	230	120	9xØ22

Load Cell Specifications

Rated Output	2.0mV/V±0.1%	Safe Temp. Range	-10°C to + 70°C
Zero Balance	±1% of rated output	Temp. Compensated	-10°C to + 40°C
Creep after 30 minutes	±0.03% of rated output	Safe Overload	150%
Nonlinearity	±0.03% of rated output	Input Impedance	1120 ohm ± 20 ohm
Hysteresis	±0.03% of rated output	Output Impedance	1000 ohm ± 5 ohm
Repeatability	±0.03% of rated output	Insulation Resistance	≥5000 M ohm (50V DC)
Temp. effect on output	≤0.002% of applied output/°C	Rated Excitation	10V DC/AC
Temp. effect on zero	≤0.002% of rated output/°C	Maximum Excitation	15V DC/AC
Wire Length	13m	Wire Material	GN(+E) BK(-E) WT(+S) RD(-S)BN(+SEN) BU(-SEN)

Weighing Mount

Installation



A,B : In rectangular layout, one of the four weighing modules should remove the lateral spacing device.