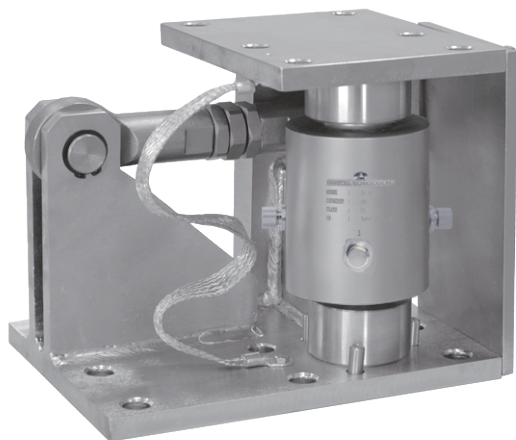
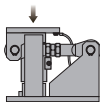


Weighing Mount

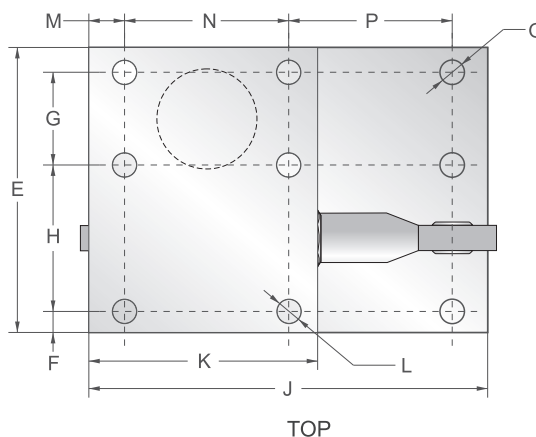
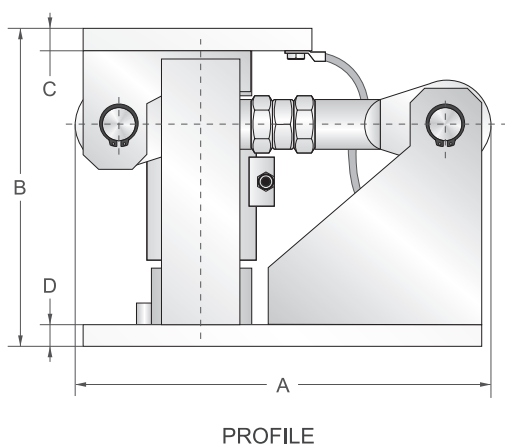


Capacities

6t, 7.5t, 10t, 20t, 30t, 50t

Features

- Total stainless steel construction
- CD-SD (column type load cell) installed
- Easy to install
- Suitable for truck scales, etc.
- RS485 communication signal interface, can accurately transmit the weight signal, and it is not easy to be disturbed so that to cause the weighing error
- Cable and connection: stainless steel double shielded cable and quick plug connector, no need any tools so that simplify the on-site service
- Wireless junction box: the system uses the network to cancel the connection of multiple load cells of the junction box, eliminating the probability of failure to improve the reliability of the entire weighing system, simplifying the on-site service
- Digital compensation technology and interface (the load cell sets the independent digital compensation interface for each parameter adjustment)
- The connecting assembly indenter of load cell with anti rotation
- Monitor the performance of the load cell, self-monitoring
- The compensation technique of digital automatic angle correction

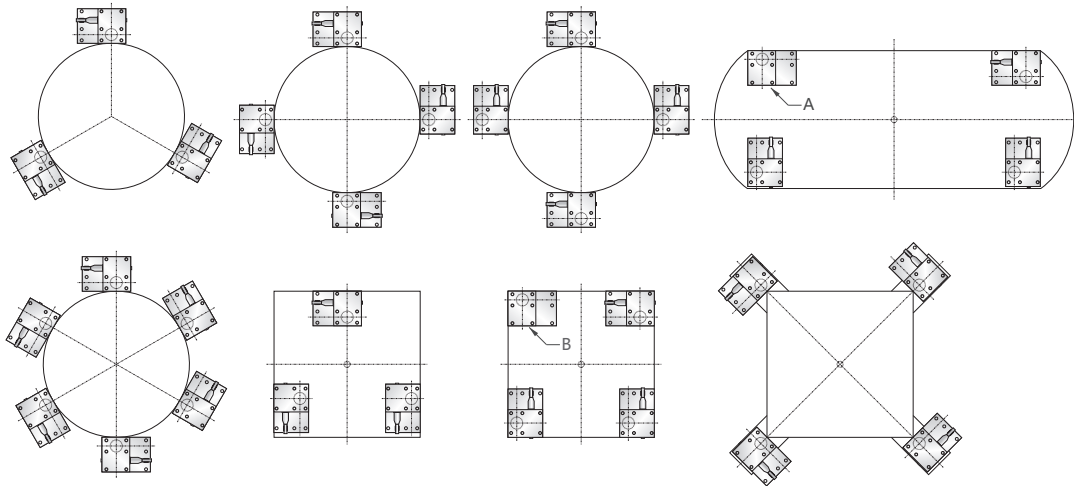


Capacities		A	B	C	D	E	F	G	H	J	K	L	M	N	P	Q
6t~50t	mm	292	222.5	15	15	200	17.5	65	102.5	280	160	6xØ28	25	115	115	9xØ18

Weighing Mount

Load Cell Specifications			
Zero Balance	±1.5% of rated output	Operating temperature range	-10°C - +40°C
Class of accuracy	C3、C6	Load cell number range	1-10
Data transmission	RS485 interface with 2 wires Dual communication	Safe Overload	150%
Communication protocol	Trancell definition	Insulation Resistance	≥2000 M ohm (50V DC)
Data refresh frequency	80HZ/S	Rated Excitation	9-12V
Rate of data signalling	57600BPS	Protection grade	IP68

Installation



A,B : In rectangular layout, one of the four weighing modules should remove the lateral spacing device.