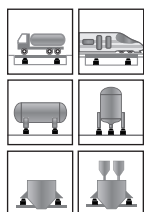
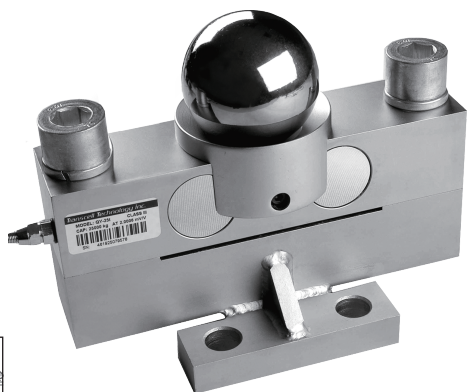
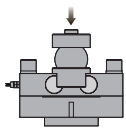


Double Ended Shear Beam

Double Ended
Shear Beam



Capacities

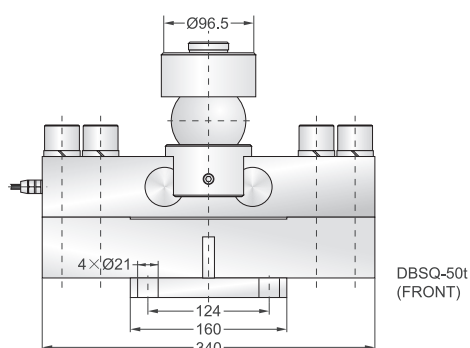
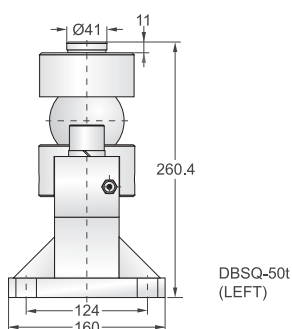
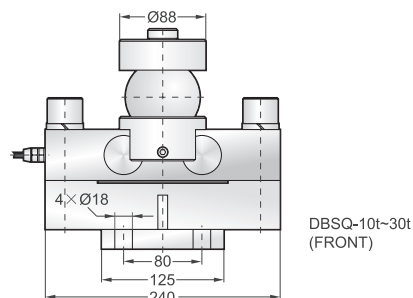
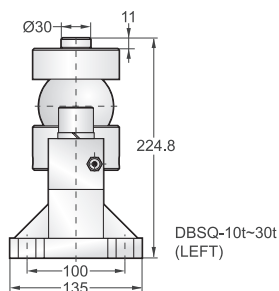
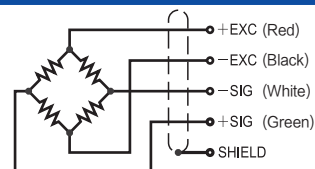
10t, 20t, 30t, 50t

Features

- Double ended shear beam load cell
- Alloy steel construction
- High accuracy
- High stability
- Easy to install
- Protected against corrosion by nickel-plated treatment
- Suitable for truck scales, rail scales, bin and hopper scales, etc.

Schematic

Red : + input
Black : - input
White : - output
Green : + output



Specifications

Rated Output	2.0mV/V $\pm 0.1\%$	Safe Temp. Range	-10°C to + 70°C
Zero Balance	$\pm 1\%$ of rated output	Temp. Compensated	-10°C to + 40°C
Creep after 30 minutes	$\pm 0.03\%$ of rated output	Safe Overload	150%
Nonlinearity	$\pm 0.03\%$ of rated output	Input Impedance	775 ohm ± 20 ohm
Hysteresis	$\pm 0.03\%$ of rated output	Output Impedance	700 ohm ± 5 ohm
Repeatability	$\pm 0.03\%$ of rated output	Insulation Resistance	≥ 5000 M ohm (50V DC)
Temp. effect on output	$\leq 0.002\%$ of applied output/°C	Rated Excitation	10V DC/AC
Temp. effect on zero	$\leq 0.002\%$ of rated output/°C	Maximum Excitation	15V DC/AC
Wire Length	13m/15m	Wire Material	Red(+ E) Black(- E) White(- S) Green(+ S)