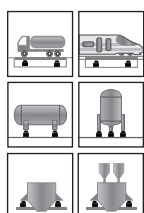
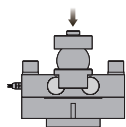


Double Ended Shear Beam



Capacities

10t, 20t, 30t, 50t

Features

- Double ended shear beam load cell
- Alloy steel construction
- High accuracy
- High stability
- Easy to install
- Protected against corrosion by nickel-plated treatment
- Suitable for truck scales, rail scales, bin and hopper scales, etc.

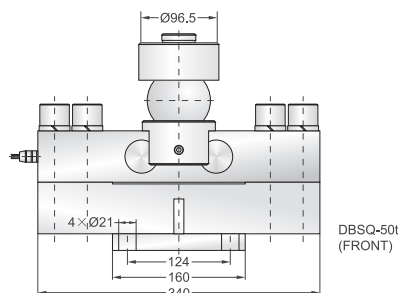
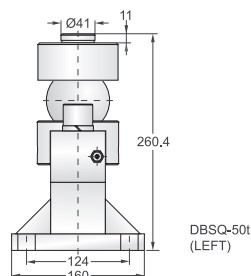
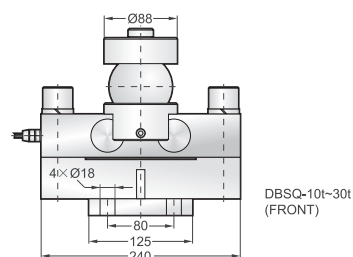
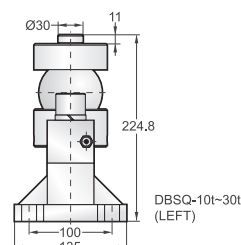
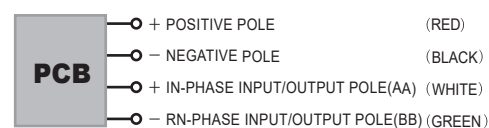
Schematic

Red : + positive pole

Black : - negative pole

White : + in-phase input/output pole(AA)

Green : - re-phase input/output pole(BB)



Specifications

Rated Output	300000 counts	Safe Temp. Range	-10°C to + 70°C
Creep after 30 minutes	±0.02% of rated output	Temp. Compensated	-10°C to + 40°C
Nonlinearity	±0.03% of rated output	Safe Overload	150%
Hysteresis	±0.03% of rated output	Rated Supplied Voltage	8V DC
Repeatability	±0.03% of rated output	Max Supplied Voltage	8V DC
Temp. effect on output	≤0.002% of applied output/°C	Input Current	40 mA
Temp. effect on zero	≤0.002% of rated output/°C	Communication Mode	RS 485
Wire Length	13m/15m	Baud Rate	19200 bps
Max Output Distance	1000m		