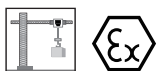
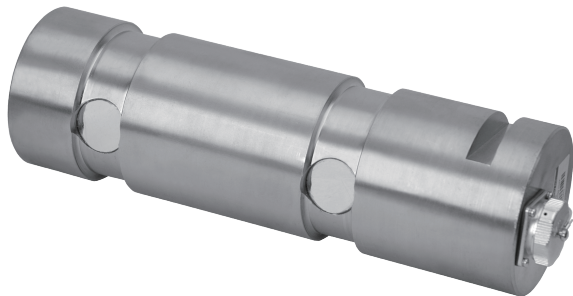
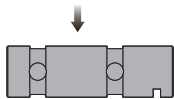


Double Ended Shear Beam



Capacities

30t, 70t, 100t

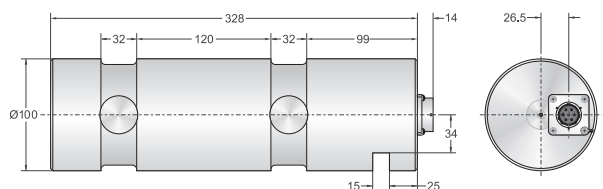
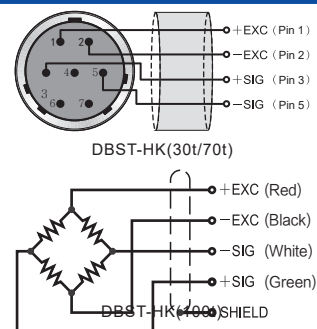
Features

- Double ended shear beam load cell
- Nickel-plated alloy steel construction
- High accuracy
- High stability
- High protection class
- Easy to install
- Use in tough industrial environment
- Suitable for all kinds of safety limiters

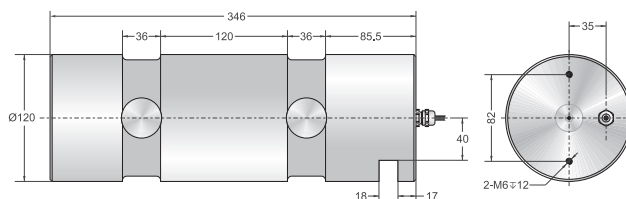
Schematic

PIN 1 : + input
PIN 2 : - input
PIN 3 : + output
PIN 5 : - output

Red : + input
Black : - input
White : - output
Green : + output



DBST-HK (30t/70t)



DBST-HK (100t)

Specifications

Rated Output	1.0mV/V \pm 0.1%	Safe Temp. Range	-10°C to + 70°C
Zero Balance	\pm 1% of rated output	Temp. Compensated	-10°C to + 40°C
Creep after 30 minutes	\pm 0.5% of rated output	Safe Overload	150%
Nonlinearity	\pm 0.5% of rated output	Ultimate Overload	200%
Hysteresis	\pm 0.5% of rated output	Input Impedance	770 ohm \pm 30 ohm
Repeatability	\pm 0.5% of rated output	Output Impedance	700 ohm \pm 5 ohm
Temp. effect on output	\leq 0.03% of applied output /°C	Insulation Resistance	\geq 5000 M ohm (50V DC)
Temp. effect on zero	\leq 0.03% of rated output /°C	Rated Excitation	10V DC/AC
Wire Length	30t/70t : 7 pins connector 100t : Red(+E) Black(-E) Green(+S) White(-S)	Maximum Excitation	15V DC/AC