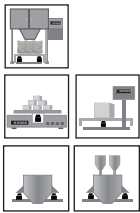
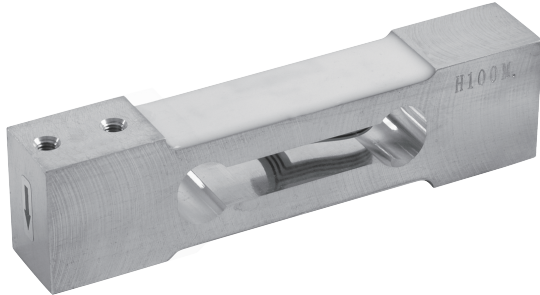
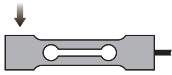


Single Point



Capacities

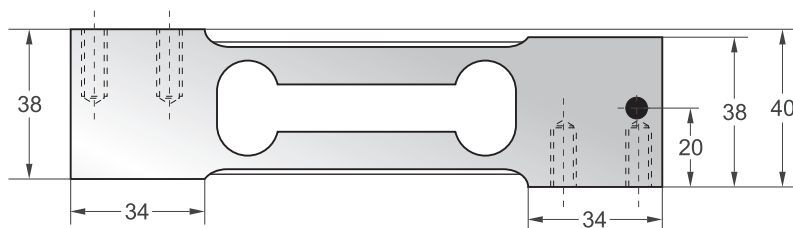
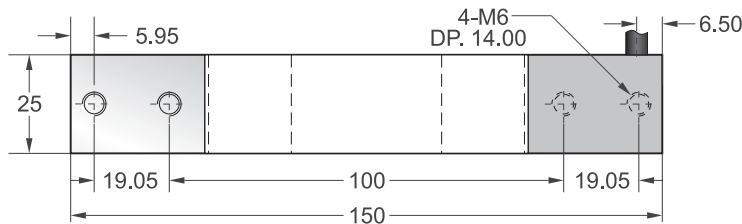
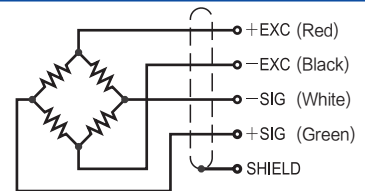
5kg, 7kg, 10kg, 15kg, 20kg, 30kg, 50kg, 60kg, 75kg, 100kg

Features

- Single point load cell
- Aluminum construction
- High accuracy
- High stability
- Easy to install
- Suitable for retail and postal weighing, package weighing systems, parts counting and small hopper scales, bench scales, etc.

Schematic

Red : + input
Black : - input
White : - output
Green : + output



Specifications

Rated Output	2.0mV/V \pm 10%	Safe Temp. Range	-10°C to + 70°C
Zero Balance	\pm 3% of rated output	Temp. Compensated	-10°C to + 40°C
Creep after 30 minutes	\pm 0.03% of rated output	Safe Overload	150%
Nonlinearity	\pm 0.03% of rated output	Input Impedance	410 ohm \pm 20 ohm
Hysteresis	\pm 0.03% of rated output	Output Impedance	350 ohm \pm 5 ohm
Repeatability	\pm 0.03% of rated output	Insulation Resistance	\geq 5000 M ohm (50V DC)
Temp. effect on output	\leq 0.002% of applied output/°C	Rated Excitation	10V DC/AC
Temp. effect on zero	\leq 0.002% of rated output/°C	Maximum Excitation	15V DC/AC
Wire Length	2.75m	Wire Material	Red(+ E) Black(- E) White(- S) Green(+ S)