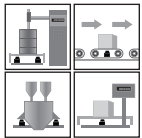
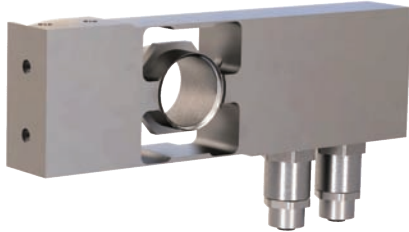
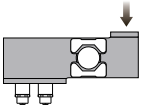


## Digital single point



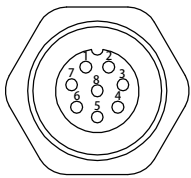
### Capacities

10kg, 20kg, 50kg

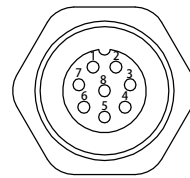
### Features

- Stainless steel construction
- Accuracy class C3
- Environmental Protection IP69k
- Suitable for bench scales, conveyor scales, check weighers, filling plants, packaging machines and industrial process control

### Schematic

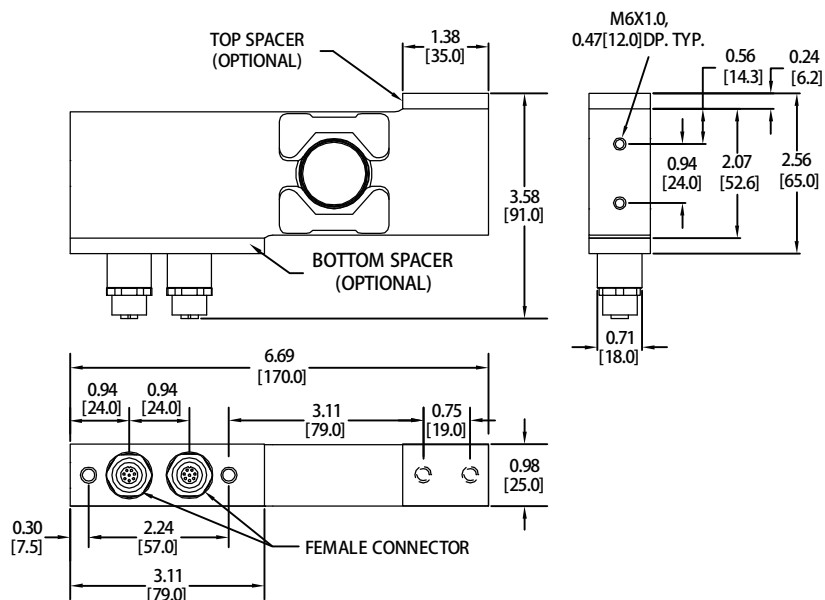


Standard Female Connector Signal Electronics		
Pin No.	RS232+CAN	RS485+RS422
1	GND1	GND1
2	PROGRAM	PROGRAM
3	CANH	Rx+
4	TRIGGER INPUT	TRIGGER INPUT
5	CANL	Rx-
6	RxD	Tx-
7	TxD	Tx+
8	PWR+	PWR+



Logical I/O'S Female Connector Signal Electronics	
Pin No.	Connection
1	OUT1
2	OUT2
3	OUT3
4	OUT4
5	UB2
6	GND2
7	IN1
8	IN2

Platform: 450x450mm



## Digital single point

Specification	
Minimum load cell verification interval(Vmin)	Emax/10000
Combined error	≤±0.017 %FS
Creep @ 30 min	≤±0.017 %FS
Zero balance, raw counts	±2000 increment
Output resolution at full load, raw counts	256000 increment(10kg), 512000 increment(20kg), 512000 increment(50kg)
Internal AD conversion rate	1200upd./sec
Safe load limit	300%* Emax (10kg), 150%* Emax (20kg~50kg)
Ultimate load	600%* Emax (10kg), 300%* Emax (20kg~50kg)
Eccentric loading error acc.	±0.0233%FS
Temperature effect on zero	0.001 %FS/°C
Temperature effect on span	0.001 %FS/°C
Operating temperature range	-10°C to +40°C
Storage temperature range	-40°C to +70°C
EMC performance	MID Class E2 (Industrial locations)
I/O protection, all pins	Reversed polarity; Excess voltage and surge
Insulation body/ Electronics @ 500VDC	≥1 GΩ
Vibration	2.5G operational; 5G non-operational
Environmental Protection	Body IP69k; Connectors IP68
Corrosion resistance	All stainless steel
Fix, digital low pass IIR filter, default	18Hz(Supress 50Hz and 60Hz influence)
Adjustable , digital low pass IIR filter	18-0.25; Selectable in 8 steps
Adjustable , digital low pass FIR filter	40-5; Selectable in 8 steps
Adjustable, external output update rate	1200-9upd./sec; Selectable in 8 steps

GENERAL I/O' s	
Hardware interface, CAN version	CAN and RS232
Hardware interface, RS version	RS485 and RS422 (Both four wire)
Data transmission rates CAN	125kb; 250kb; 500kb; 1000kb
Data transm. rates RS485/RS422/RS232	9.6kb; 19.2kb; 38.4kb; 57.6kb; 115.2kb; 230.4kb; 460.8kb
Protocol CAN	CAN Open
Protocol RS485/ RS422/ RS232	ASCII or Modbus RTU
Logical input, programmable	Trigger Level 2-30Vdc, <3mA, Ref to Gnd
Power supply	9-40VDC
Connections	Standard 8 pin, female M12AF 0008

LOGICAL I/O' s	
Number of logic inputs	Two (2) with common GND
Programmable Logic input data	Trigger level 2-30Vdc, <3mA, Ref to GND
Number of logic outputs	Four (4) channels with common High drive
Single channel logic output data	ON : Current ≤ 1.0 Amp. R <sub>DS</sub> 0.055Ω
Dual channel output data	ON : Current ≤ 2.0 Amp. R <sub>DS</sub> 0.028Ω (Paralleled wiring and programmed for synchronous switching)
Four channel total constant	ON: Current ≤ 3.0 Amp and 660mW OFF: ≤ 40Vdc
Protection measures of all channels	Short circuit protection; Over temperature shut down; Over voltage protection ; ESD protection
Connection	Separate 8 pin, female M12AF 008