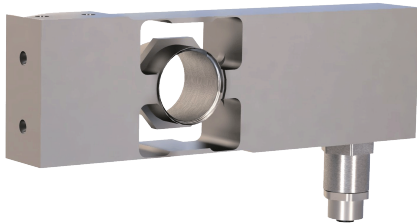
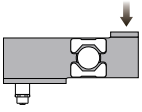


Digital single point



Capacities

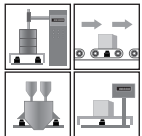
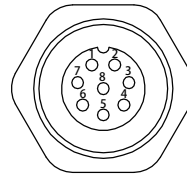
10kg, 20kg, 50kg

Features

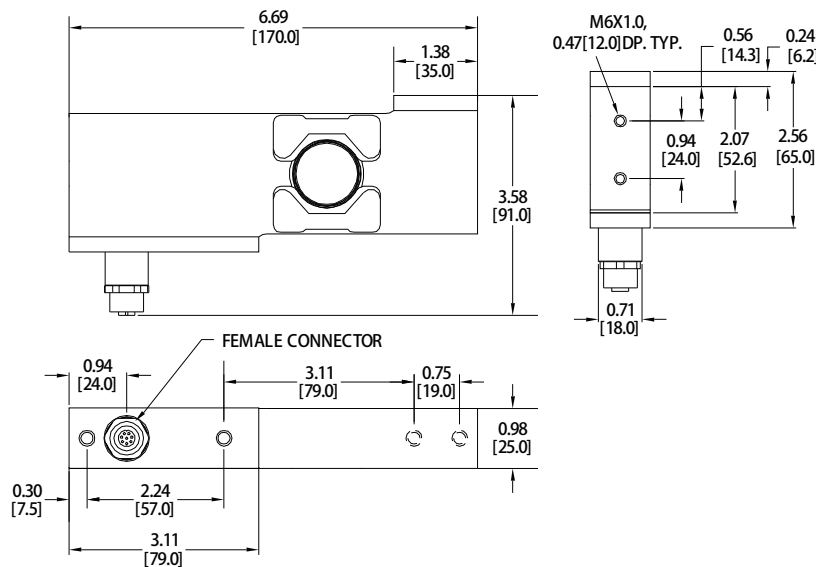
- Stainless steel construction
- Accuracy class C3 and C6
- Environmental Protection IP69k
- OIML accuracy class C7
- Suitable for bench scales, conveyor scales, check weighers, filling plants, packaging machines and industrial process control

Schematic

Pin No.	RS232+CAN	RS485+RS422
1	GND1	GND1
2	PROGRAM	PROGRAM
3	CANH	Rx+
4	TRIGGER INPUT	TRIGGER INPUT
5	CANL	Rx-
6	RxD	Tx-
7	TxD	Tx+
8	PWR+	PWR+



Platform: 450x450mm



Specification

Minimum load cell verification interval(Vmin)	±2000 counts
Combined error	≤±0.012 %FS
Creep @ 30 min	≤±0.012 %FS
Zero balance, raw counts	±2000 increment
Output resolution at full load, raw counts	256000 increment(10kg), 512000 increment(15kg), 512000 increment(20kg)
Internal AD conversion rate	1200upd./sec
Safe load limit	300%* Emax (10kg), 150%* Emax (20kg~50kg)
Ultimate load	600%* Emax (10kg), 300%* Emax (20kg~50kg)

Digital single point

Specification	
Eccentric loading error acc.	±0.0233%FS
Temperature effect on zero	0.001%FS/°C
Temperature effect on span	0.001%FS/°C
Operating temperature range	-10°C to +40°C
Storage temperature range	-40°C to +70°C
EMC performance	MID Class E2 (Industrial locations)
I/O protection, all pins	Reversed polarity; Excess voltage and surge
Insulation body/ Electronics @ 500VDC	≥1 GΩ
Vibration	2.5G operational; 5G non-operational
Environmental Protection	Body IP69k; Connectors IP68
Corrosion resistance	All stainless steel (Electro polished)
Fix, digital low pass IIR filter, default	18Hz(Supress 50Hz and 60Hz influence)
Adjustable , digital low pass IIR filter	18-0.25; Selectable in 8 steps
Adjustable , digital low pass FIR filter	40-5; Selectable in 8 steps
Adjustable, external output update rate	1200-9upd./sec; Selectable in 8 steps

WEIGHING SCALE FUNCTIONS

In accordance with OIML R76

- Zero and Max calibration
- Span calibration point by choice with extrapolation.
- Selectable calibrated or called Zero. Selectable Zero tracking
- One division defined as 1; 2; 5; 10; 20; 50; 100; 200 or 500
- Decimal point as xxxx; xxx.x; xx.xx or x.xxx
- Local gravity acceleration (g=m/sec²) compensation

GENERAL I/O' s	
Hardware interface, CAN version	CAN and RS232
Hardware interface, RS version	RS485 and RS422 (Both four wire)
Data transmission rates CAN	125kb; 250kb; 500kb; 1000kb
Data transm. rates RS485/RS422/RS232	9.6kb; 19.2kb; 38.4kb; 57.6kb; 115.2kb; 230.4kb; 460.8kb
Protocol CAN	CAN Open
Protocol RS485/ RS422/ RS232	ASCII or Modbus RTU
Logical input, programmable	Trigger Level 2-30Vdc, <3mA, Ref to Gnd
Power supply	10-30VDC ≤ 0.4 Watt
Connections	Standard 8 pin, female M12AF 0008
OPERATING SOFTWARE	Complete Set-up, Calibration and Analysis program available