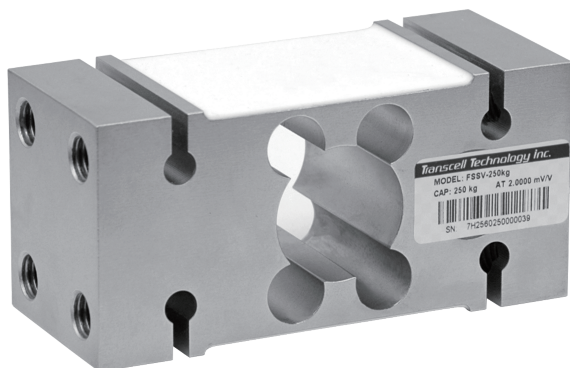


## Single Point



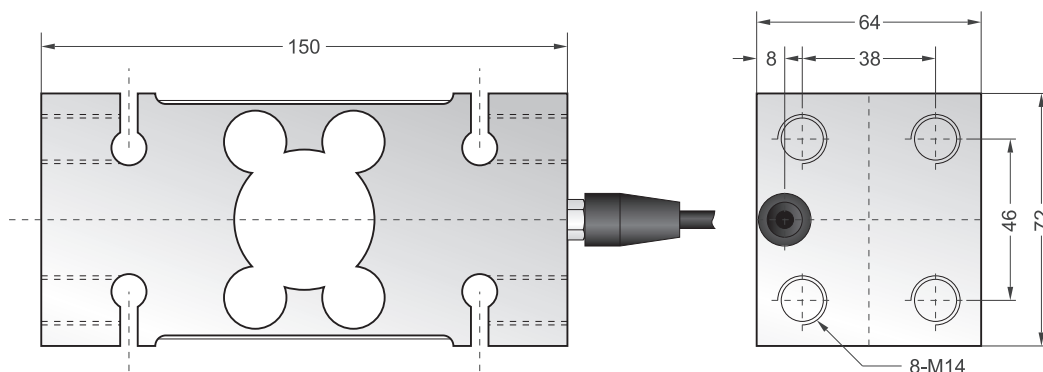
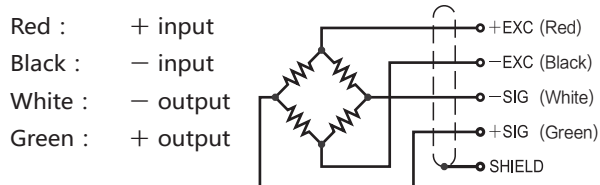
### Capacities

150kg, 250kg, 500kg, 750kg, 1000kg

### Features

- Single point load cell
- Nickel-plated alloy steel construction
- High accuracy
- High stability
- Easy to install
- Protected against corrosion by nickel-plated treatment
- High protection class
- Suitable for package systems and batching systems, etc.

### Schematic



### Specifications

Rated Output	2.0mV/V $\pm$ 0.1%	Safe Temp. Range	-30°C to + 70°C
Zero Balance	$\pm$ 1% of rated output	Temp. Compensated	-10°C to + 40°C
Creep after 30 minutes	$\pm$ 0.03% of rated output	Safe Overload	150%
Nonlinearity	$\pm$ 0.03% of rated output	Ultimate Overload	200%
Hysteresis	$\pm$ 0.03% of rated output	Input Impedance	387 ohm $\pm$ 20 ohm
Repeatability	$\pm$ 0.03% of rated output	Output Impedance	350 ohm $\pm$ 5 ohm
Temp. effect on output	$\leq$ 0.02% of applied output /°C	Insulation Resistance	$\geq$ 5000 M ohm (50V DC)
Temp. effect on zero	$\leq$ 0.02% of rated output /°C	Rated Excitation	10V DC/AC
Wire Length	2.5m	Maximum Excitation	15V DC/AC
Wire Material	Red(+ E) Black(- E) White(- S) Green(+ S)		