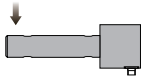


Loadpin



Capacities

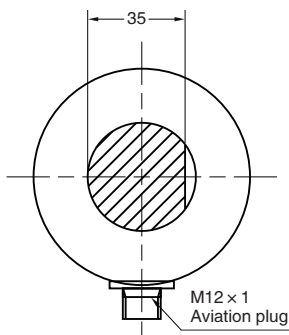
6t

Features

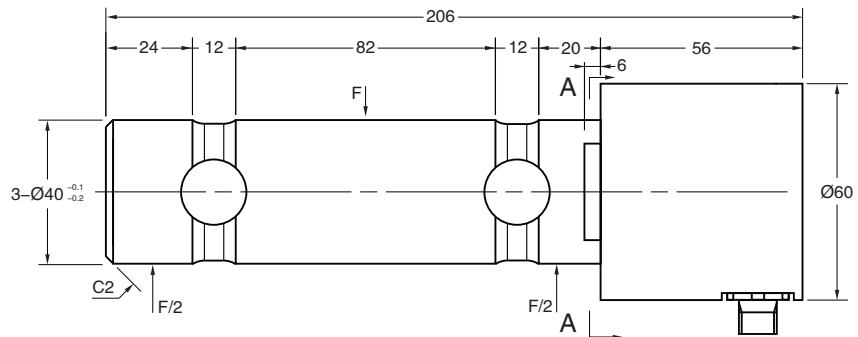
- Loadpin load cell
- 17-4PH stainless steel construction
- High accuracy
- High stability
- Easy to install
- Suitable for hoisting machine, lifting equipment, etc.

Socket pin definition

PIN	FUNCTION
1	Power +
2	RXD(calibration)
3	AO_Out
4	GND(calibration)



SECTION A-A



Specifications			
Rated Output	4-20mA	Temp. Compensated	-10°C to + 40°C
Zero Balance	±1%F.S	Operating Temp. Range	-30°C to + 70°C
Error	±0.5%F.S	Safe Overload	150%F.S
Creep after 30 minutes	±0.1%F.S	Limit Overload	250%F.S
Temp. effect on zero	±0.1%F.S/10°C	I Insulation Resistance	≥2000MΩ (50V DC)
Temp. effect on output	±0.1%F.S/10°C	Excitation Voltage	10-30V DC
Seal grade	IP67	Cable	PUR, 4 shield wire, Ø4.5mm, 2m